

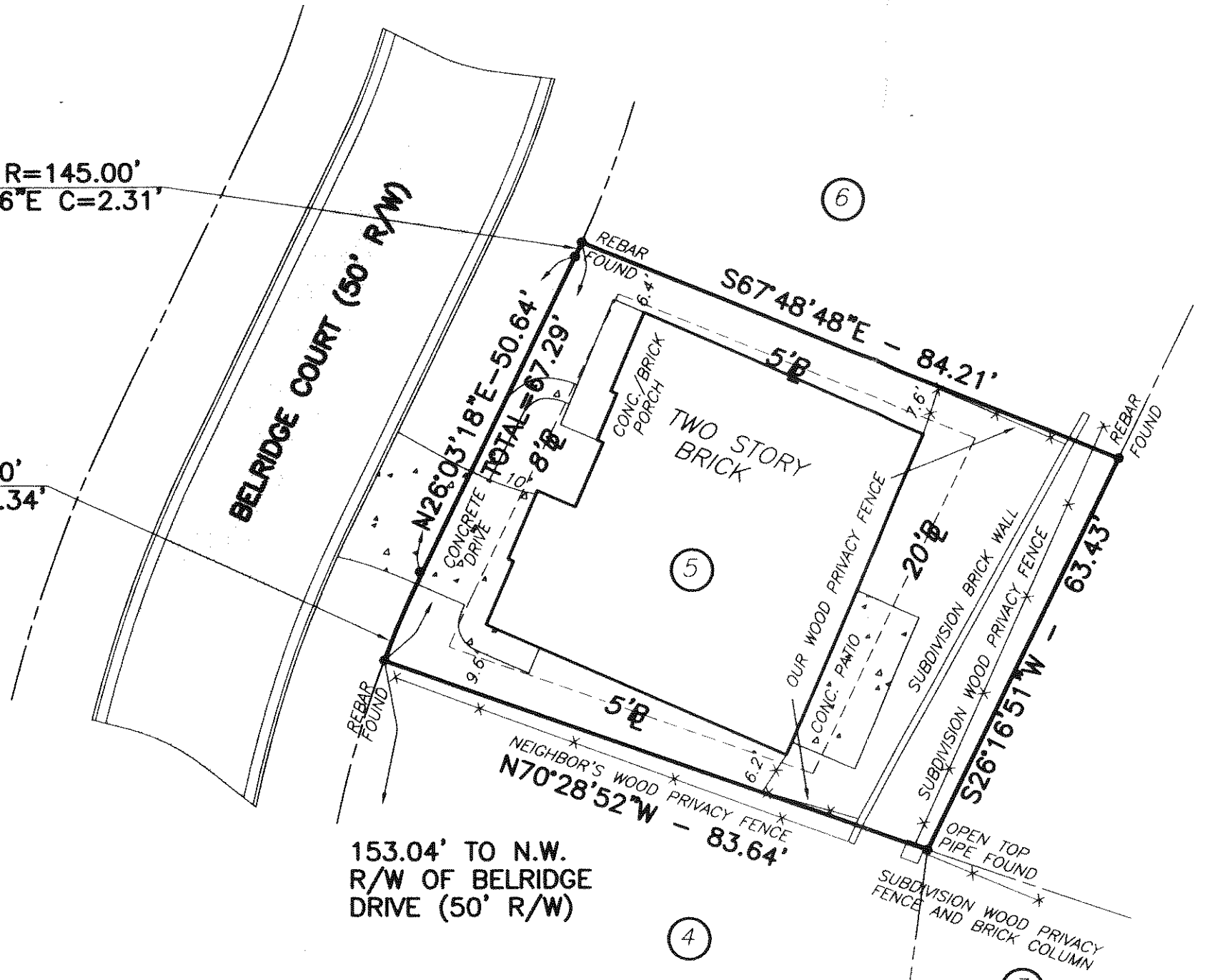
**SURVEY NOTES**

1. STORM SEWER, SANITARY SEWER AND OTHER BURIED UTILITIES MAY HAVE BEEN PAVED OR COVERED OVER. THE LOCATION OF UNDERGROUND UTILITIES AS SHOWN HEREON ARE BASED ON ABOVE GROUND STRUCTURES AND RECORD DRAWINGS PROVIDED TO THE SURVEYOR. LOCATIONS OF UNDERGROUND UTILITIES MAY VARY FROM LOCATIONS SHOWN HEREON. ADDITIONAL BURIED UTILITIES MAY BE ENCOUNTERED. NO EXCAVATIONS WERE MADE DURING THE PROGRESS OF THIS SURVEY TO LOCATE BURIED UTILITIES. BEFORE EXCAVATIONS ARE BEGUN, CALL THE UTILITIES PROTECTION CENTER FOR ADDITIONAL INFORMATION.  
THROUGH OUT GEORGIA 1-800-282-7411
2. SURVEYOR HAS MADE NO INVESTIGATION OR INDEPENDENT SEARCH FOR EASEMENTS OF RECORD, ENCUMBRANCES, RESTRICTIVE COVENANTS, OWNERSHIP TITLE EVIDENCE, OR ANY OTHER FACTS THAT A CURRENT TITLE SEARCH MAY DISCLOSE.
3. THIS PLAT WAS PREPARED FOR THE EXCLUSIVE USE OF THE PERSON, PERSONS OR ENTITY NAMED HEREON. THIS PLAT DOES NOT EXTEND TO ANY UNNAMED PERSON, PERSONS, OR ENTITY WITHOUT THE EXPRESS RECERTIFICATION OF THE SURVEYOR NAMING SUCH PERSON, PERSONS OR ENTITY.
4. THE FIELD DATA UPON WHICH THIS PLAT IS BASED HAS A CLOSURE PRECISION OF ONE FOOT IN 10,000+ FEET, AND AN ANGULAR ERROR OF 02" PER ANGLE POINT, AND WAS ADJUSTED USING COMPASS RULE. THIS PLAT HAS BEEN CALCULATED FOR CLOSURE AND IS FOUND TO BE ACCURATE WITHIN ONE FOOT IN 100,000+ FEET. LINEAR AND ANGULAR MEASUREMENTS WERE OBTAINED BY USING A TOPCON TOTAL STATION.  
BEARINGS SHOWN WERE COMPUTED FROM ANGLES TURNED FROM A SINGLE MAGNETIC OBSERVATION.
5. THIS PLAT NOT INTENDED FOR RECORDING.



A=2.31' R=145.00'  
N25°35'56"E C=2.31'

R=14.34' R=157.00'  
N23°26'18"E C=14.34'



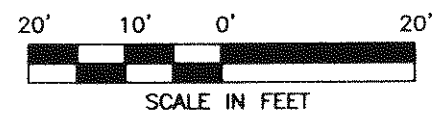
153.04' TO N.W.  
R/W OF BELDRIDGE  
DRIVE (50' R/W)

TOTAL AREA= 0.126 ACRES  
OR 5,480 SQ. FT.

2020 BELDRIDGE COURT  
SMYRNA, GEORGIA

**LEGEND**

B.S.E.	BELLSOUTH EASEMENT
S.S.E.	SANITARY SEWER EASEMENT
SSMH	SANITARY SEWER MANHOLE
D.E.	DRAINAGE EASEMENT
CB	CATCH BASIN
DI	DROP INLET
SMH	STORM MANHOLE
JB	JUNCTION BOX
HW	HEADWALL
CMP	CORRUGATED METAL PIPE
RCP	REINFORCED METAL PIPE
U.E.	UTILITY EASEMENT
L.L.L.	LAND LOT LINE
BL	BUILDING LINE
PL	PROPERTY LINE
CL	CENTERLINE



No.	Revision	Date

**McLUNG SURVEYING SERVICES, INC.**

2235 Cooper Lake Road, S.E.  
Smyrna, Georgia 30080 (770) 434-3383

This property (●) (is not) located in a Federal Flood Area as indicated by F.I.R.M. Official Flood Hazard Maps.

In my opinion this plat is a correct representation of the land platted.

Fences should not be placed using side dimensions from house.



Michael R. Noles  
Georgia RLS #2646  
Member SAMSOG  
3-16-06

PROPERTY OF  
ANIR DE

LOT 5  
DEVONSHIRE COURT  
UNIT 1  
(F.K.A. BELFAIRE)

LAND LOT 700  
DISTRICT 2ND. SECTION 1ST  
COUNTY COBB  
GEORGIA

PLAT PREPARED: 3-16-06  
FIELD: 3-16-06 SCALE: 1"=20'

PB 195
PG 92
DB
PG
CB-S